

Emotional & Me Supports



Washington Township Public Schools
School Counseling and Curriculum & Instruction Departments

Thank you for having us.

HELL



Jennifer Grimaldi – Director of District School Counseling

Kara Ieva, PhD – Counseling in Educational Settings, Rowan University

Gretchen Gerber – Director of Elementary Education

Steve Gregor, EdD – Director of Secondary Education





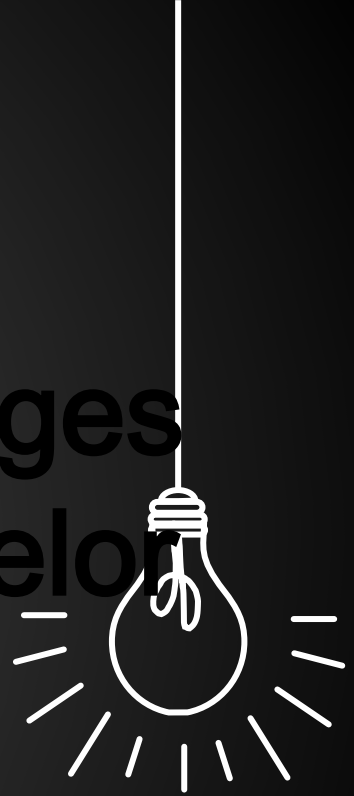
Agenda



1. Systemic Changes – School Counselor Readiness
2. Emotional & Mental Health Supports
3. Academics to Support Social Emotional



1. Systemic Changes School Counselor Readiness



The Power of School



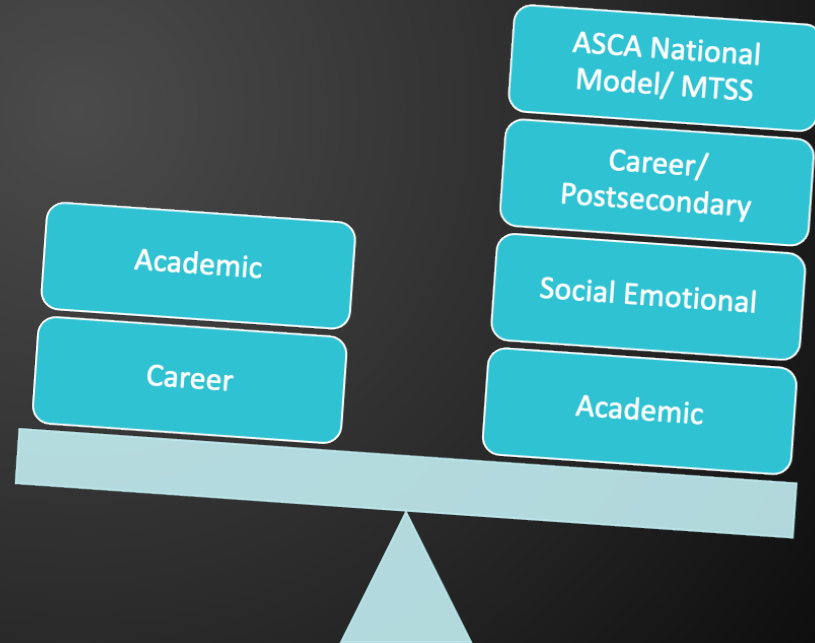
Development of
Academic, Career, Social/Emotional

★ Job Descriptions – Revised

- For all 3 Domains, counselors (secondary) were only operating under academic and postsecondary planning
- Only 5 were trained in current model

<1997

1997-
present

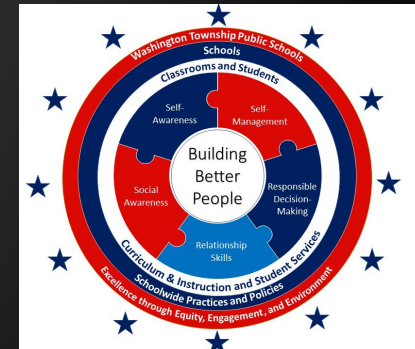
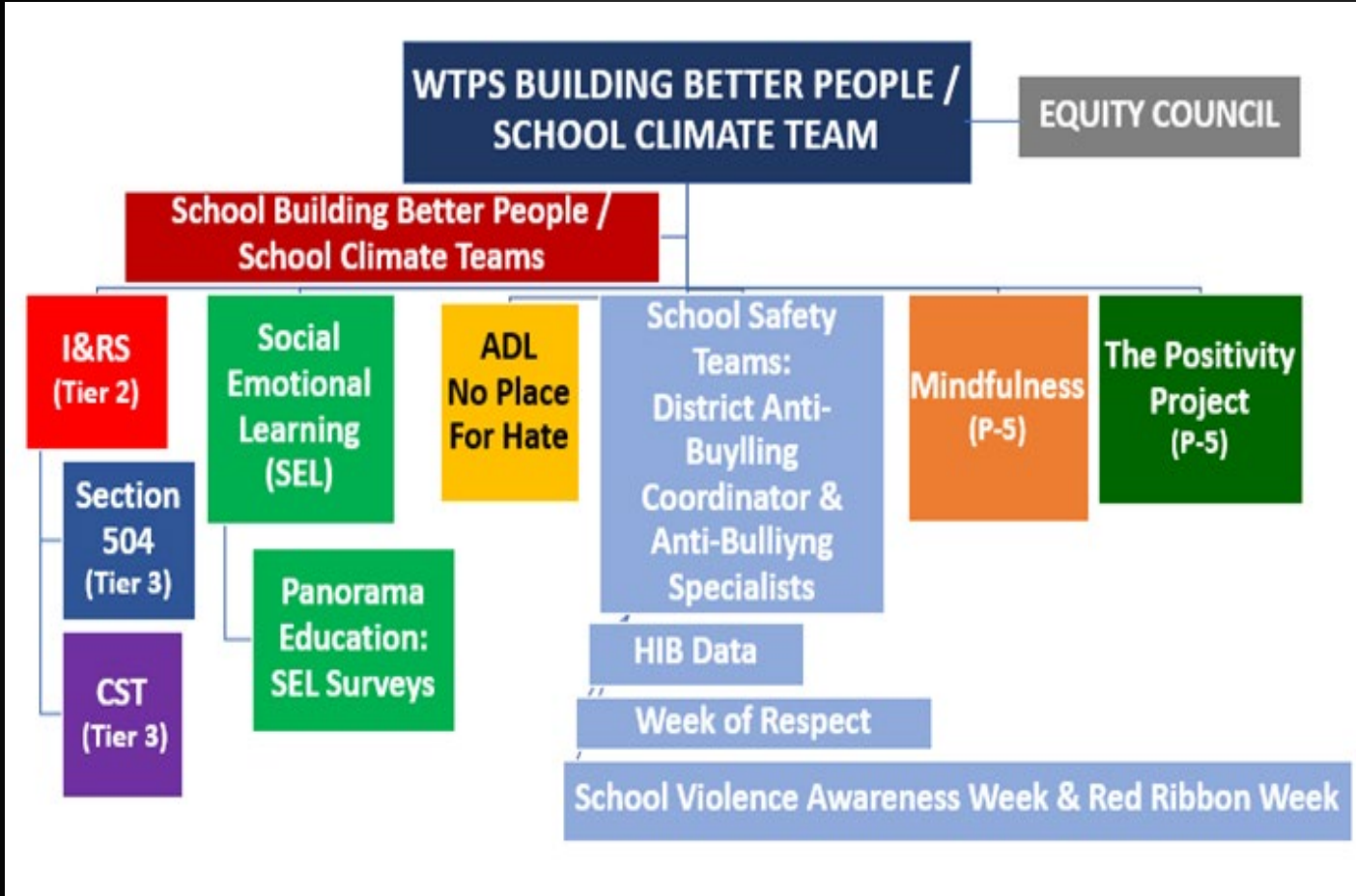


Director of District School Counseling

- ★ School Counseling Websites
 - Alignment to School Counseling
 - Pandemic Resources
- ★ In-District Department E-Manual
- ★ Daily Individual Consultation
- ★ Monthly Department Meetings
- ★ Centralized Data
 - Students, Home Instruction, Section 504, Panorama SEL, Naviance, Suicidal Ideation, Self-harming
- ★ School Climate / SEL BBP Teams (Next slide)
 - Quarterly Meetings
 - SEL Universal Screener
 - School Safety – HIB Data
- ★ Examples of Other Responsibilities
 - Section 504
 - Home Instruction
 - Intervention & Referral Services
 - Evaluations of all counselors, SACs, nurses



Vision/Mission: Building Better People by helping all students achieve school success and plan for their future





2. Emotional & Mental Health Supports





WTPS & Rowan University

Dr. Kara Ieva – Professional Development & Consultation

- ★ Rowan University CES Partnership – Interns
- ★ Data – Log Entries, ASCA
- ★ ASCA National Model – Books, RAMP
- ★ Multi-Tiered System of Supports (MTSS) – Triangle Model using data
- ★ Group Counseling
- ★ District School Climate / SEL
 - SEL Consult
 - BBP District Team Member
 - Parent Informed Consent including Telecounseling





Professional Development

- ★ Gary Vermeire – NJDOE I&RS Training
- ★ Sanu Dev – Section 504 Legal Training, Transgender Policy
- ★ Panorama Education – SEL Survey Trainings
- ★ Dr. Jennifer Betters-Bubon – MTSS Training (included ACEs), ASCA books
- ★ Professional Learning Communities (PLCs) – Per level for collaboration on data, school climate/SEL, current trends, etc.
- ★ ASCA – Available to all staff, National Model / RAMP
- ★ NJSCA – Available to all staff
- ★ Crisis Prevention Institute – Abigail Hull / WTHS Counselor trained by special education and is turnkeying to Counselors and CST
- ★ Email – Professional articles and free webinars



School Counseling Services

Summer 2021

Grades K-12

- SEL and PowerSchool data to identify at-risk students for individual counseling services and family needs

Grades 9-12

- Summer school counseling and student mentoring who attended Educere summer school and included parents

March – August 2020

- SAC e-newsletter
- Pandemic Resources on School Websites / Email
- Equity Resources on School Websites / Email
- P-12 School Counseling Curriculum

2021-2022 Direct Services

- Classroom Lessons
- Small Group Counseling
- Wraparound Services
- WTHS Wellness Room
- WTHS Freshmen Transition Program
- WTHS Counselor Series

Restorative Practices

- Student Conduct
- HIB

MTSS Data

- PowerSchool SIS
- I & RS
- Home Instruction
- Section 504
- SEL

Counseling Referrals

- WTPS Community Resources List – Counselor Email Signatures
- [RUSEL-TC](#)

Comparison

- Sister Schools / Districts
- Nationally



Student Assistance Coordinator
Curriculum
Fall 2020

- ★ Substance Abuse Prevention / Intervention
- ★ Grades 6-12 Health Class Lessons
- ★ School Climate / SEL Monthly Mini-Lessons



NJSLS Comprehensive
Health / PE

- ★ Emotional Health
- ★ Community Health

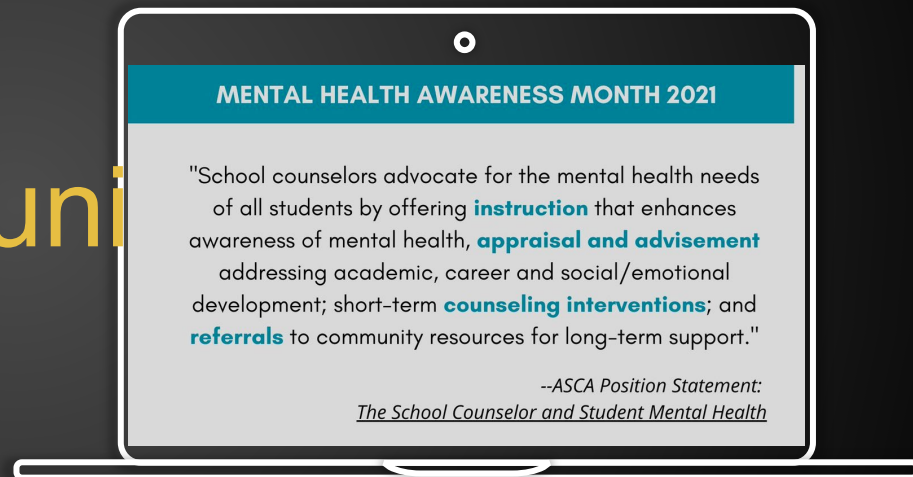
Mental Health Literacy



WTPS Communi

May 2021

Mental Health Awareness Month
Presentation from
Minding Your Mind





- ★ **Applied / Approved** – District is to receive 4 licensed mental health therapists to work with Medicaid eligible students
- ★ **Company has not been able to fill positions** – Had one applicant who declined

Grant

School Based
Healthcare
Solutions
Network, Inc



Staffing

- ★ 2021-2022 Counseling Interventionists (BOE Approved) – Repurposed 3 SAC positions by increasing 3 school counselors per level
- ★ 2021-2022 Anti-Bullying Specialists (BOE Approved) – Proposal to remove responsibility from school counselors and SACs
- ★ November 2021 (Denied due to ABS Proposal) – Proposal for additional traveling elementary school counselor through ESSER III funds
- ★ January 2022 (In Progress) – Proposal for additional traveling elementary school counselor through ESSER III funds



2021023 Proposals

1

WTPS PD 2021-2022
MTSS
Transgender
ASCA
Crisis Counseling
Grief / Loss
Adult SEL
Equity

2

WTPS PD Upcoming
ACE / Trauma
Informed Care,
Depression / Self-
Harm / Suicide,
Responsive Services
Pet Therapy
Self-Care/Wellness

3

WTPS School
Counselors
Pay to provide
Afterschool /
evening student /
family sessions,
webinars / family
engagement

4

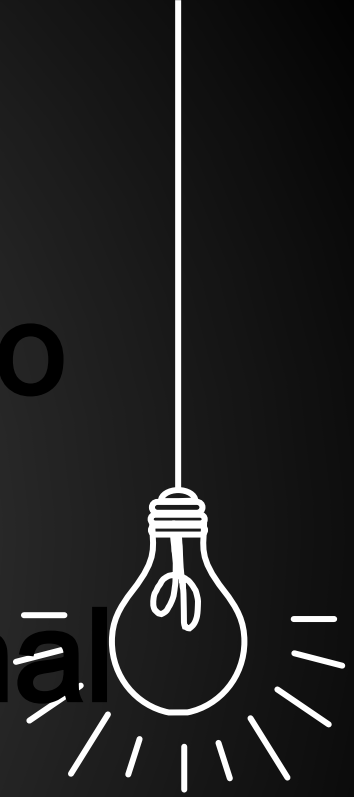
WTPS School
Counselors
Pay to provide
Summer
counseling
services

5

Apple Counseling
Contract for a
licensed mental
health therapist to
serve in-district to
supplement Grant



3. Academics to Support Social Emotional



Elementary



Health Curriculum

- ★ Includes SEL through character education lessons formulated around the Positivity Project's key character traits.



Elementary



SEL Time

- ★ In addition to the health curriculum, staff uses Nearpod SEL lessons, class meetings, and Mindfulness lessons to support SEL.





Elementary

Character Traits and SEL are Integrated Throughout the Day

- ★ Staff reinforces character traits through literature, special areas, social studies, and class discussions. These discussions and activities bolster the direct instruction offered.
- ★ Mindfulness and movement are also integrated throughout the day and during transitions to help students manage their own emotions.

Secondary



- ★ Health Curriculum
 - Includes SEL and wellness
- ★ Social Studies & ELA Curriculum
 - Includes SEL and mental health awareness
- ★ All Departments
 - LATIC SEL



Thanks for your su